

We ensure buildings are safe, accessible, energy efficient and compliant with the Building Code of Australia (BCA). We provide unbiased advice, achieving the best results for building owners, developers, managers, occupants, design teams and the community.



# EDUCATION



## SERVICES

- Accredited Certification including; Construction Certificates (CC), Complying Development Certificates (CDC) and Occupation Certificates (OC)
- Certification of Crown & Commonwealth Projects (Section 6.28)
- BCA Design compliance assessments and reporting
- Provision of advice and interpretation of BCA and legislative matters

- Assessment of performance based BCA solutions (Performance Solutions)
- Guidance and liaison with Consent Authorities
- Fire Safety Audits and upgrade strategies
- Technical due diligence audits
- Feasibility studies (change of use or building upgrades)

## HOW WE CAN HELP YOU?

We influence the design, planning and functionality of buildings, minimising compliance risks at the feasibility stage, the design stage, during construction or for an existing building. By identifying innovative solutions that efficiently meet or exceed BCA regulations, we can provide you with a number of benefits:

### REDUCED PROJECT RISK

We follow clear protocols for risk minimisation when assessing documentation, ensuring all information we assess is complete and accurate - allowing us to solve problems quickly.

### REDUCED COSTS

Our team optimises the efficiency of the design process, minimising redesign and reducing costs by establishing BCA compliance parameters at an early stage.

### SEAMLESS SERVICE

We understand the commercial demands of the property industry, and pride ourselves on offering the most responsive and succinct service to our clients.

### INCREASED EFFICIENCY

We reduce time delays and add value to our clients' projects by understanding state legislation and anticipating the potential difficulties our clients could encounter.



WE INFLUENCE THE  
DESIGN, PLANNING  
AND FUNCTIONALITY



# INNER SYDNEY HIGH SCHOOL

The \$225 million flagship, future-focused development provides 1200 student places and employs 100 teaching and support staff in a new 11-storey facility. The facility's design and planning incorporates functional efficiencies in vertical circulation, building services and environmentally sustainable features to achieve an accessible and enjoyable environment for students and staff. The project involves adaptive reuse of the existing 150-year-old heritage buildings on the site, which seamlessly interface with the new tower.

### OUR INVOLVEMENT

- Group DLA were engaged to provide Building Code of Australia (BCA) consultancy throughout the design development phases of the project, including the provision of certification on behalf of the Crown throughout the multi staged program
- Our involvement also included assessment of extensive Fire Engineering, Energy Efficiency and DDA Accessibility Performance Solutions

**ARCHITECT**  
FJMT

**CLIENT**  
School Infrastructure NSW (SINSW)

**PROJECT MANAGER**  
Root Partnerships

**BUILDER**  
Hansen Yuncken





Construction of a \$67 million high school to accommodate 2000 students including expansion of the existing adjacent public school to house a further 1000 students. The project was developed as an integrated Year K – 12 facility, providing students with creative hands on learning hubs, including a range of small, medium & large-scale shared teaching spaces to establish a framework for flexible learning.

**ARCHITECT**  
Perumal Pedavoll

**CLIENT**  
Department of Education NSW

**BUILDER**  
Hindmarsh Construction



### OUR INVOLVEMENT

- Group DLA were engaged to provide Building Code of Australia (BCA) consultancy throughout the design development phases of the project, including the provision of certification on behalf of the Crown.
- Our involvement also extended to the assessment of extensive Fire Engineering and DDA Accessibility Performance Solutions, including liaison with Fire Rescue NSW (FRNSW) & Local Authorities.



Group DLA was engaged to facilitate the statutory approval process for the South West and Western Sydney regions of the national Building the Education Revolution (BER) programme. This consisted of a total of 364 projects within 263 operating school environments, and involved the design, construction and refurbishment of infrastructure including communal halls, covered outdoor learning areas, libraries, classrooms, canteens, administration

areas and toilet blocks. In particular, the SW Sydney programme was the second largest contract within the Australian Government's \$16.2 billion National Building Economic Stimulus Plan. The programme has been referred to by Government sources as being twice the size of the Olympics, delivered in one third of the time at 100 times more sites whilst occupied by children.

### OUR INVOLVEMENT

- Group DLA were engaged as the appointed Accredited Certifier / Principal Certifying Authority (PCA)
- Responsible for issue of Complying Development Certificates (SEPP Infrastructure)
- Construction Certificates and Occupation Certificates for each project over a multi staged program



### CLIENT

Hansen Yuncken  
(South West Region)

Brookfield Multiplex  
(Western Sydney Region)

Lend Lease  
(Sydney North Region & Central Coast)



Construction of a \$188 million, sixteen (16) level education building to accommodate approximately 500 staff and 4,300 students. The facility which was purpose built to house a large Faculty of Engineering and Information Technology, comprises predominantly offices, computer laboratories, lecture theatres, meeting rooms and basement car parking.

Specific challenges posed by the 44,000 square-metre building's design included the unique aluminium "binary" screens (perforated with computer binary code) that defines the façade, the targeted five-star Green Star rating, and the large crevasse-like pedestrian atrium which runs through the heart of the building, both horizontally and vertically forming a connection with the surrounding UTS education precinct.

### OUR INVOLVEMENT

- Group DLA were engaged by the University to provide Building Code of Australia (BCA) consultancy throughout the design development phases of the project, including the provision of certification on behalf of the Crown throughout the multi staged program
- Our involvement included the assessment of extensive Fire Engineered and Accessibility Performance Solutions

### ARCHITECT

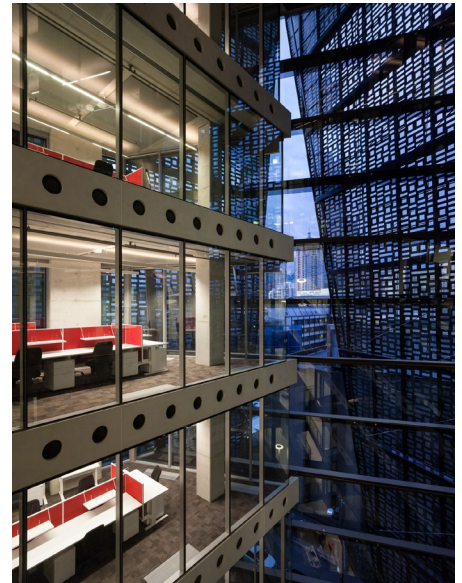
Denton Corker Marshall

### BUILDER

Lend Lease

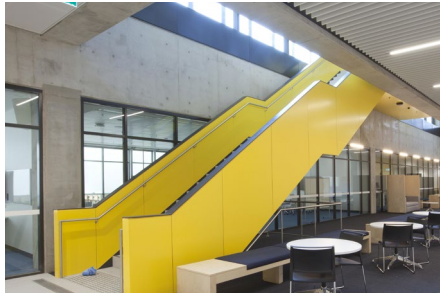
### CLIENT

University of Technology Sydney (UTS)



# UNSW MATERIAL SCIENCE & ENGINEERING BUILDING

Construction of a \$145 million research facility located within the University of New South Wales (UNSW) campus, Kensington. The development comprises nine (9) storeys and includes approximately 20,000 square metres of laboratories, learning spaces, research areas, offices and workshop display space. World class laboratory spaces form the heart of the facility and are transparent, to reveal the work of the scientists inside.



### OUR INVOLVEMENT

- Group DLA were engaged as the Building Code of Australia (BCA) Consultant, working closely with the project team to provide ongoing BCA compliance advice and reporting throughout the design phases of the development

### ARCHITECT

HDR + Grimshaw Architects

### CLIENT

University of New South Wales (UNSW)

### BUILDER

Multiplex



## KEY PEOPLE



**BRETT  
CLABBURN**  
**DIRECTOR**

### QUALIFICATIONS

Graduate Diploma Town Planning (UTS)

Graduate Diploma Building Surveying & Assessment (UTS)

Associate Diploma Health & Building Surveying

Building Surveyor - Unrestricted  
NSW Fair Trading BDC0064



**CHARLES  
SLACK-SMITH**  
**DIRECTOR**

### QUALIFICATIONS

Masters of Business Administration - Macquarie Graduate School of Management

Masters of Building Surveying (UWS)

Bachelor of Applied Science Environmental Health (UWS)

Building Surveyor - Unrestricted  
NSW Fair Trading BDC0378



**JUSTIN  
JONES-GARDINER**  
**DIRECTOR**

### QUALIFICATIONS

Graduate Diploma Building Surveying (UWS)

Associate Diploma Environmental Health & Building Surveying (SIT)

Building Surveyor - Unrestricted  
NSW Fair Trading BDC0204

Building Surveyor (Level 1)  
Australian Institute of Building Surveyors (AIBS No. 3144)

## TECHNICAL + SUPPORT STAFF

With a proven depth of experience and expertise, the Group DLA team is well placed to provide our clients with specialist technical staff who draw upon their diverse industry backgrounds across all property sectors. We pride ourselves on a dynamic and innovative culture, driven by respected, intuitive and approachable industry leaders.

Our team members are accredited to the highest level by NSW Fair Trading, ensuring you will only deal with a suitably qualified and experienced professional, dedicated to ensuring the successful delivery of your project, each and every time.

## CONTACT

T +61 2 8355 3160  
F +61 2 8355 3169  
E [syd@groupdla.com.au](mailto:syd@groupdla.com.au)  
A Level 7, 10 Bridge Street Sydney, NSW 2000  
W [groupdla.com.au](http://groupdla.com.au)  
L [linkedin.com/company/group-dla](https://www.linkedin.com/company/group-dla)

## AFFILIATIONS

