

Group DLA Access provides Access Consultancy services that make the built environment more accessible for people with disability and better places for everyone to enjoy. Our Specialist Consultants deliver comprehensive DDA Access assessments and advice based on technical knowledge, practical understanding and experience across all types and sizes of development. We support clients and design teams through a collaborative approach with options to meet or exceed building compliance requirements and achieve project goals.



SERVICES

- Planning Reviews and Capability Statements for Development Approval
- Design Reviews and Compliance reporting throughout design and construction stages
- Performance Based Design Briefs (PBDB) and Performance Solution reports to address Building Code of Australia (BCA) non-compliances
- Access Design and Compliance Statements for Certification
- DDA Access audits and “Affected Part” inspections of existing buildings

- Masterplan and Access design guideline development
- Advice and interpretation of Disability Discrimination Act (DDA) and Access matters
- Site Inspections and advice/support during construction
- Universal design guidance and best practice advice for inclusion, especially for public domain/landscape design projects
- Liveable Housing Design assessments and LHA certification

HOW WE CAN HELP YOU?

We provide expert Access advice on planning, design and construction issues that impact on the accessibility of buildings and spaces for people with physical, sensory and other forms of disability.

We ensure that buildings and spaces are accessible under the legislative requirements of the Disability Discrimination Act (DDA), Access to Premises Standards, Building Code of Australia (BCA) and Accessibility Standards to achieve the best outcomes for building owners, developers, managers, occupants, design teams and the community.



Our Specialist Access Consultants can provide you with numerous benefits:

GOOD DESIGN

By applying universal design principles and establishing access design parameters at an early stage, we help integrate access provisions that respect design intent and achieve good design outcomes.

REDUCED RISK

By assisting clients to meet the obligations of the Disability Discrimination Act (DDA) to provide equitable, dignified, independent safe access for people with disability, we help promote inclusion and minimise risk from potential DDA complaints.

SOLUTION FOCUS

We adopt a holistic approach to Access that balances building compliance with common-sense. Our advice is constructive, and solution focussed to reduce the need for redesign and costly retrofitting or remedial works during construction.

CLIENT SERVICE

We understand the commercial demands of projects and provide a pro-active, and responsive service to our clients to support the design, and construction process and help prevent the potential difficulties that our clients could encounter.

Embracing design and diversity to create an accessible, inclusive and sustainable built environment.



New Maitland Hospital

Metford Road, Metford NSW

The state-of-the-art hospital facility meets the growing health service needs for the surrounding communities of the Hunter Valley.

The new eight (8) storey hospital building (approx. 46,500 m²) includes emergency care, chemotherapy unit, operating theatres, maternity services, paediatric care, cardiac unit, inpatient beds, mental health services, rehabilitation services, palliative care, outpatient clinics, helipad and on-site carparking facilities.

OUR INVOLVEMENT

- Engaged as the Access Consultant to provide (DDA) Access consultancy services throughout planning, design development and construction stages.



CLIENT

Multiplex Australia

ESTIMATED VALUE

\$470 Million

ARCHITECT

BVN Architects

LANDSCAPE ARCHITECT

Black Beetle

BUILDER

Multiplex

ADMINISTRATION BUILDING, UNSW

UNSW Student Academic Administration Building (SAAB) B22

Kensington NSW

Development of a multi-storey building over a five-storey podium, (approx. 18,392 m²) to accommodate teaching and learning facilities, common student facilities, event and exhibition space, workplace for administrative functions and Chancellery, retail space, supporting facilities, flexible-use areas and basement carparking.

The building is surrounded by public domain areas and major pedestrian site linkages to Library Lawn and University thoroughfares.

OUR INVOLVEMENT

- Engaged as the Access Consultant to provide (DDA) Access consultancy services throughout planning, design development and construction stages.

CLIENT

The University of New South Wales (UNSW)

ESTIMATED VALUE

\$133 Million

ARCHITECT

3XN Architects

LANDSCAPE ARCHITECT

Aspect Studios





BANKSTOWN CITY CAMPUS, WSU

Western Sydney University - Bankstown City Campus (WSU- BCC)

Bankstown NSW

The nineteen (19) storey high-rise building for University/ Education use includes learning/teaching spaces, Conference Centre, retail tenancies, offices and meeting spaces and basement carparking.

OUR INVOLVEMENT

- Engaged as the Access Consultant to provide (DDA) Access consultancy services throughout planning, design development and construction stages.

CLIENT

Western Sydney University (WSU) / Walker Corporation / Built

ESTIMATED VALUE

\$260 Million

ARCHITECT

Lyons Architects (base-build) and HDR Architects (fit-out use)

LANDSCAPE ARCHITECT

Aspect Studios





SYDNEY FISH MARKET

The new Sydney Fish Market

Pyrmont NSW

Major redevelopment of a 3.6 hectare precinct to accommodate the largest fish-market in the southern hemisphere, including innovative architectural design. Mixed-use building designed by 3XN architects, and public domain and public activation spaces, landscape designed by Aspect Studios.



OUR INVOLVEMENT

- Engaged as the Access Consultant to provide (DDA) Access consultancy services for the building and the public domain areas throughout the planning and design development stage.

CLIENT

3XN Architects / Infrastructure NSW

ESTIMATED VALUE

\$750 Million

ARCHITECT

3XN Architects and BVN Architects

LANDSCAPE ARCHITECT

Aspect Studios

SYDNEY MODERN PROJECT, A G NSW

Sydney Modern Project – Art Gallery of NSW Expansion

Sydney NSW

Development of a new stand-alone art gallery building that brings together art, architecture and landscape and doubles the size of existing display space for the art gallery.

OUR INVOLVEMENT

- Engaged as the Access Consultant to provide (DDA) Access consultancy services throughout design development and construction stages.

CLIENT

Richard Crookes Construction

ESTIMATED VALUE

\$344 million

ARCHITECT

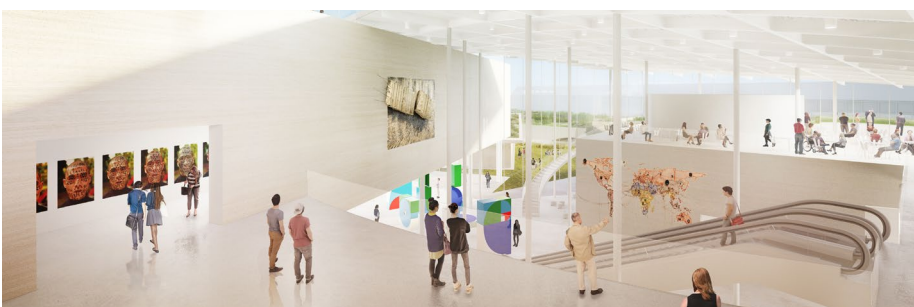
SANAA and Architectus

LANDSCAPE ARCHITECT

McGregor Coxall / GGN
Landscape Architecture

BUILDER

Richard Crookes Construction



TIDE SYDNEY OPERA HOUSE

Tours Immersive Digital Experience (TIDE) - Sydney Opera House (SOH)

Bennelong Point, Sydney NSW

Development of a custom-built space with state-of-the-art technology to suit an immersive digital experience used for public tours to give visitors a taste of the physical experience of the Concert Hall during the temporary closure (from 2020 – 2021) for building renewal works.

OUR INVOLVEMENT

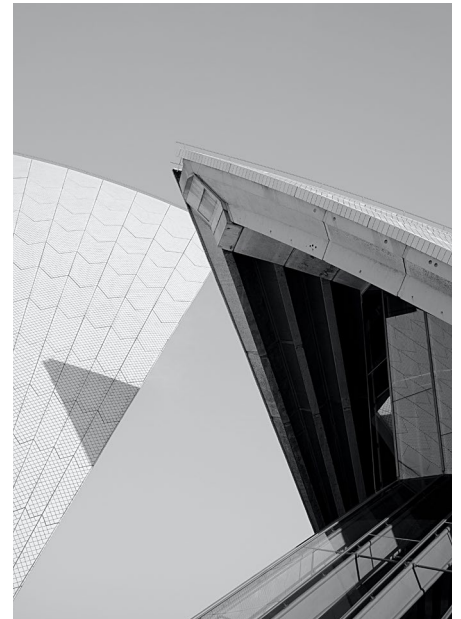
- Engaged as the Access Consultant to provide (DDA) Access consultancy services throughout planning, design development and construction stages.

CLIENT

The Sydney Opera House

ARCHITECT

Scott Carver Architects





COLLECTION CARE LABORATORY, SLNSW

Collection Care Laboratory, State Library of New South Wales (SLNSW)

Sydney NSW

Development within the existing Mitchell building consisting of internal alterations, additions and refurbishment to various staff areas, including partial relocation of heritage Glass Stacks located at lower ground level 1 and mezzanine level.

OUR INVOLVEMENT

- Engaged as the Access Consultant to provide (DDA) Access consultancy services throughout the planning, design development and construction stages.

CLIENT

State Library of New South Wales (SLNSW)

ARCHITECT

Hassell



KEY PEOPLE



ELISA MOECHTAR
MANAGER ACCESS CONSULTANCY

Elisa leads the Group DLA Access team that provides consultancy services for the development of an accessible, inclusive and sustainable built environment.

Having worked as an Access Consultant since 2004, Elisa is ACAA Accredited and has extensive access consulting experience covering all development types, including major projects.

Elisa's approach to access consulting is informed by practical experience working with people with disability and her background in interior design. She recognises the importance of design as both an outcome and a process, and works collaboratively with teams to explore constraints, identify opportunities and develop solutions to ensure building compliance and improve the accessible experience.

TECHNICAL + SUPPORT STAFF

With a proven depth of experience and expertise, the Group DLA Access team is well placed to provide our clients with specialist technical staff who draw upon their diverse industry backgrounds across all property sectors. We pride ourselves on a dynamic and innovative culture, driven by respected, intuitive and approachable

industry leaders. Our team members are accredited with the Association of Consultants in Access Australia (ACAA), ensuring you will only deal with a suitably qualified and experienced professional, dedicated to ensuring the successful delivery of your project, each and every time.

CONTACT

T +61 2 8355 3160
F +61 2 8355 3169
E syd@groupdla.com.au
A Level 7, 10 Bridge Street Sydney, NSW 2000
W groupdla.com.au
L [linkedin.com/company/group-dla](https://www.linkedin.com/company/group-dla)

AFFILIATIONS

